

# Justice LJ6

## Progressive Cavity Pump

### Features

- \* Large Hopper
- \* Welded Auger
- \* Hardened Joints
- \* Packing or Mechanical Seal
- \* 3-Stage Options
- \* Steel or Stainless Steel

### Pump Description

The Liberty Justice LJ6 Series Open Hopper Progressive Cavity Pump represents an ideal pumping solution for viscous solutions with high solids contents such as rendering plant wastes in the poultry, pork and beef industry. Flow rates of 5.20 GPM per 100 Revolutions (10 GPM to 23 GPM) at 225 PSI are standard through the range of the series. The Justice Series offers a design of a heavy-duty auger mated to a rotor and stator for the most difficult pumping applications available today.

The large rectangular feed hopper design easily accommodates your pumping medium while the non-pulsating design of the product produces a low-shear flow that conveys your medium along effortlessly. Solids in suspension of up to 50% are accommodated by the Auger design.

The modular design of the Justice Series Open Hopper Progressive Cavity pump is a hardened pinned-joint drive assembly with a body available in steel or 316 stainless steel and internal wetted components in either stainless steel or hardened tool steel with hard chrome plating for long-life and durability in abrasive pumping applications.

Rotors and Stators for the Justice Series are available in 1, 2, and 3 stages for applications with 75, 150, and 225 PSI discharge pressures with stators available in Buna Nitrile, Viton, EPDM and Natural Rubber. The standard seal design is a set of packing with a lantern ring and flush connections. mechanical Seal options are readily available.

The Liberty LJ6 Progressive Cavity Pump parts are direct aftermarket replacements that dimensionally interchange with the Moyno™ J6 Series, and the Tarby™ TJ6 Series.\*

Contact a Liberty Process representative today for more information about the Justice Series

### Materials

**Rotor:** Tool or Stainless Steel, Chrome-Plated

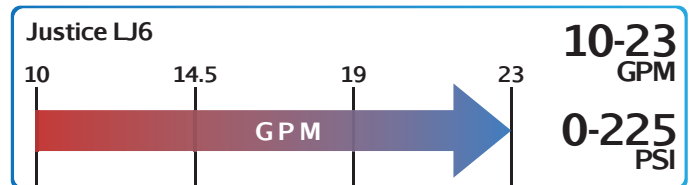
**Stator:** Buna, Rubber, Viton™, EPDM

**Motor:** 1.5, 2, 3, and 5 hp

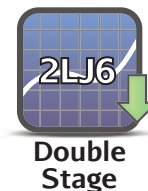
**Inlet:** 14.5" x 8"

**Outlet:** 2-1/2"

**Bases:** Steel and Stainless Steel

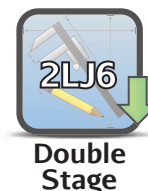


### Curves



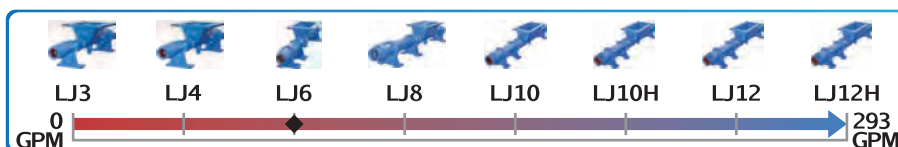
Please Click the Icon

### Drawings



Please Click the Icon

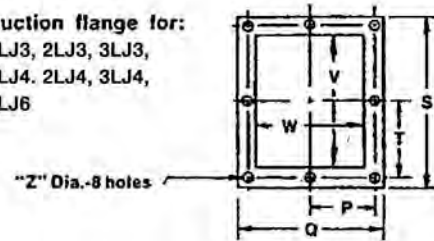
Click To Visit [www.libertyprocess.com](http://www.libertyprocess.com) >>



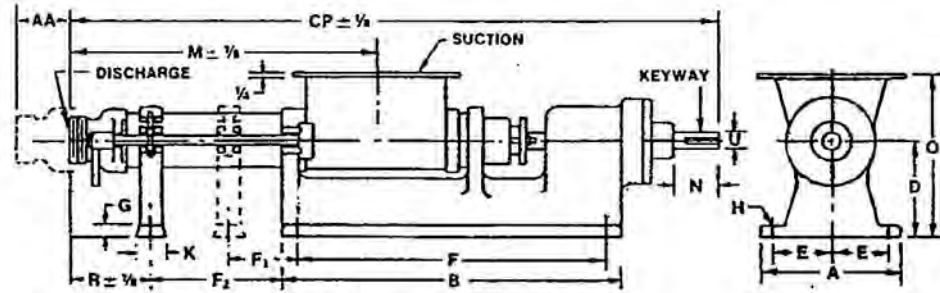
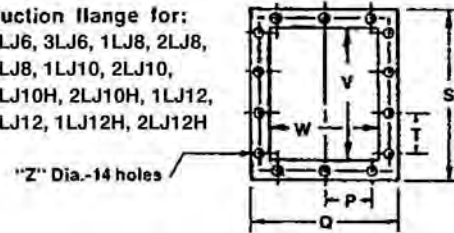
Liberty Process Equipment, Inc.  
2525 S Clearbrook Dr.  
Arlington Heights, IL 60005-4623  
P-(847) 640-7867  
F-(847) 640-7855  
sales@libertyprocess.com

# Type LJ

Suction flange for:  
1LJ3, 2LJ3, 3LJ3,  
1LJ4, 2LJ4, 3LJ4,  
1LJ6

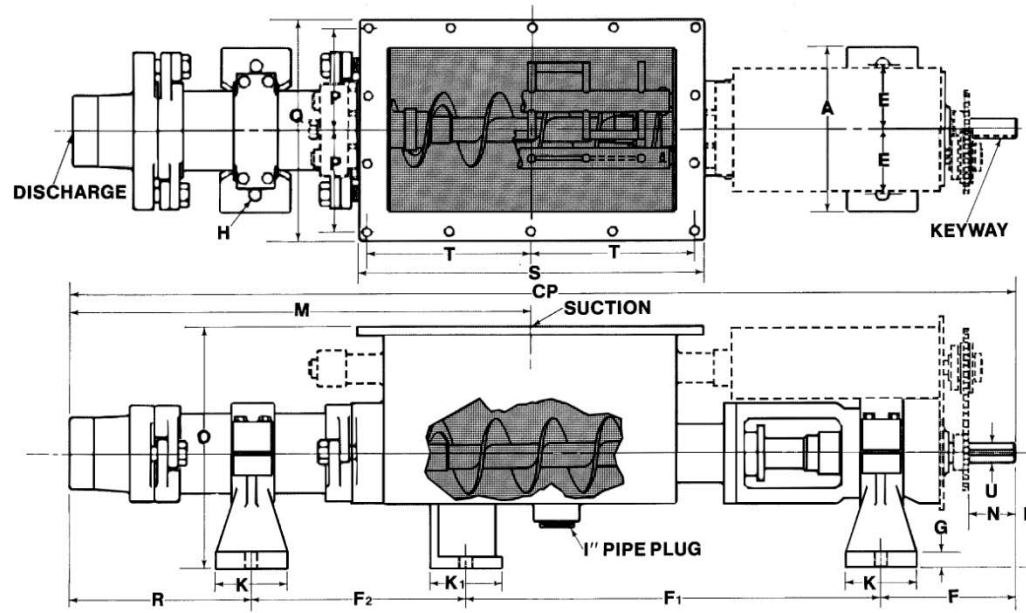


Suction flange for:  
2LJ6, 3LJ6, 1LJ8, 2LJ8,  
3LJ8, 1LJ10, 2LJ10,  
1LJ10H, 2LJ10H, 1LJ12,  
2LJ12, 1LJ12H, 2LJ12H



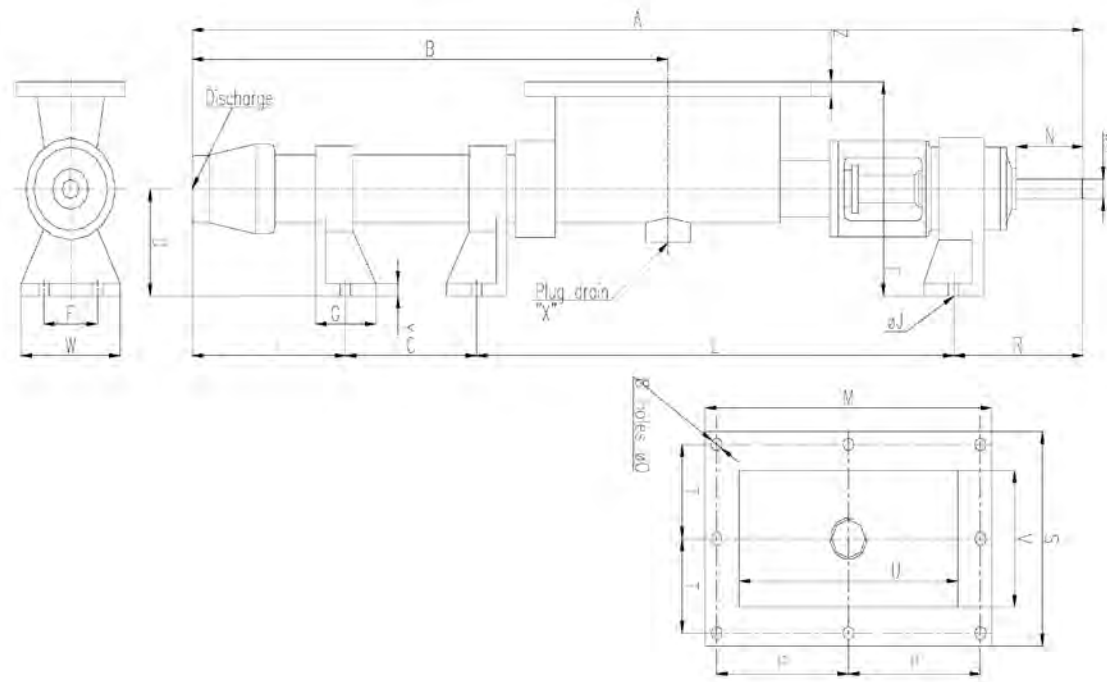
Pump	AA	A	B	CP	D	E	F	F2	G	H	K	M	N	O	P	Q	R	S	T	U	V	W	Z	Key	Disc	LBS.
1LJ4	4 7/8	6 1/4	15 1/2	32 9/16	4 1/8	2 1/2	14	5	1/2	7/16	2	15 3/4	3	7 7/8	2 3/4	6 1/2	7 1/16	9 1/2	4 1/2	15/16	7	4	7/16	1/4 1/8	2	52
1LJ6	6 5/8	8 1/2	19	41	6 1/4	3 1/2	17	7	5/8	11/16	2 1/2	19 5/16	4 3/8	10 3/4	3 3/4	8 1/2	8	10 1/2	4 3/4	1 1/8	8	6	3/16	1/4 1/8	2 1/2	117
1LJ8	5/88	11	26 1/2	54 3/8	8	4 1/2	24	11	3/4	13/16	3	24 1/8	4 1/2	13 3/4	3 1/2	11 1/2	8 1/2	15 1/2	3 3/4	1 3/8	12	8	9/16	3/8 3/16	4	273
1LJ10	10 1/4	11	29 1/4	60 5/16	9 3/4	4 1/2	26 1/4	12	1 1/8	13/16	3	27 7/8	5	15 1/2	4	12 1/2	10 9/16	16 1/2	4	1 7/8	13	9	9/16	1/2x 1/4	4	535
1LJ10H	10 1/4	11	29 1/4	60 9/16	9 3/4	4 1/2	26 1/4	12	1 1/8	13/16	3	28 1/8	5	15 1/2	4	12 1/2	10 16/16	16 1/2	4	1 7/8	13	9	9/16	1/2 1/4	4	535

### Justice Series Drawings



Pump	CP	A	D	E	F	F1	F2	G	H	H1	I	K	K1	M	N	O	P	Q	R	S	T	U	V	W	Key	Disc	Lbs.
2LJ3	35-3/8	5-3/8	4-1/8	2-1/8	5-11/16	14-1/4	7-1/2	1/2	7/16	9/16	1	3	1-3/8	18-5/16	2-1/8	8-1/4	3-7/8	9	7-15/16	13-3/4	6-1/4	3/4	9-3/4	5	3/16x3/32	1-1/4	87.5
2LJ4	45-1/4	7	5-1/2	2-3/4	7	18-5/16	10	5/8	9/16	3/4	1-1/4	3-1/2	2	23-1/2	3-1/8	11	5	11-1/2	9-15/16	16-1/4	7-3/8	15/16	11-3/4	7	1/4x1/8	2	157.5
2LJ6	61-1/4	8-5/8	6-1/4	3-1/2	8-9/16	25	14-1/2	11/16	11/16	3/4	2	4	4	33-7/8	4-3/8	12-1/2	5-1/2	12-1/2	13-3/16	19	8-3/4	1-1/8	14-1/2	8	1/4x1/8	2-1/2	258
2LJ8	74-7/8	11-1/2	8	4-1/2	9-1/4	28-5/16	20-1/2	1-7/8	7/8	3/4	2	5	5	41-1/16	4-5/8	16	6-1/2	14-1/2	16-3/16	24-1/2	11-1/2	1-3/8	20	10-1/2	3/8x3/16	4	478

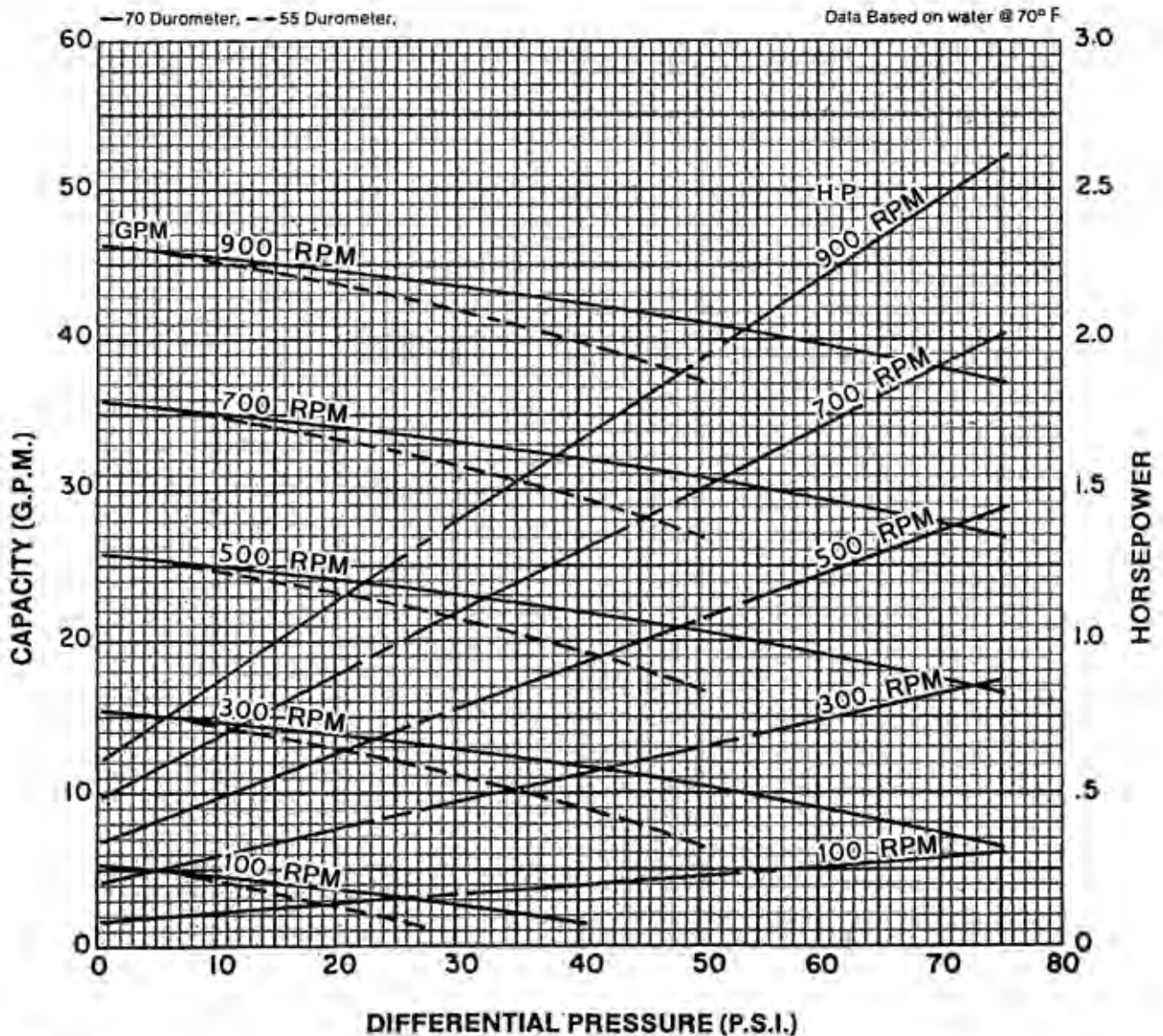
## Justice Series Drawings



Pump	A	B	C	D	E	F	G	H	I	J	L	M	N	O	P	R	S	T	U	V	W	X	Y	Z	Key	Disc
3LJ6	71.85	44.48	18	6.25	12.5	7	4	1.125	13.19	11/16	32.1	19	4.375	3/4	8.75	8.56	12.5	5.5	14.5	8	8.63	2	11/16	7/8	1/4X1/8	2-1/2" NPT
3LJ8	87.88	57.75	24	8	16	9	5	1.375	16.75	7/8	37.88	24.5	4.625	3/4	11.5	9.25	14.5	6.5	20	10.5	11.5	2	1.125	15/16	3/8X3/16	4" NPT

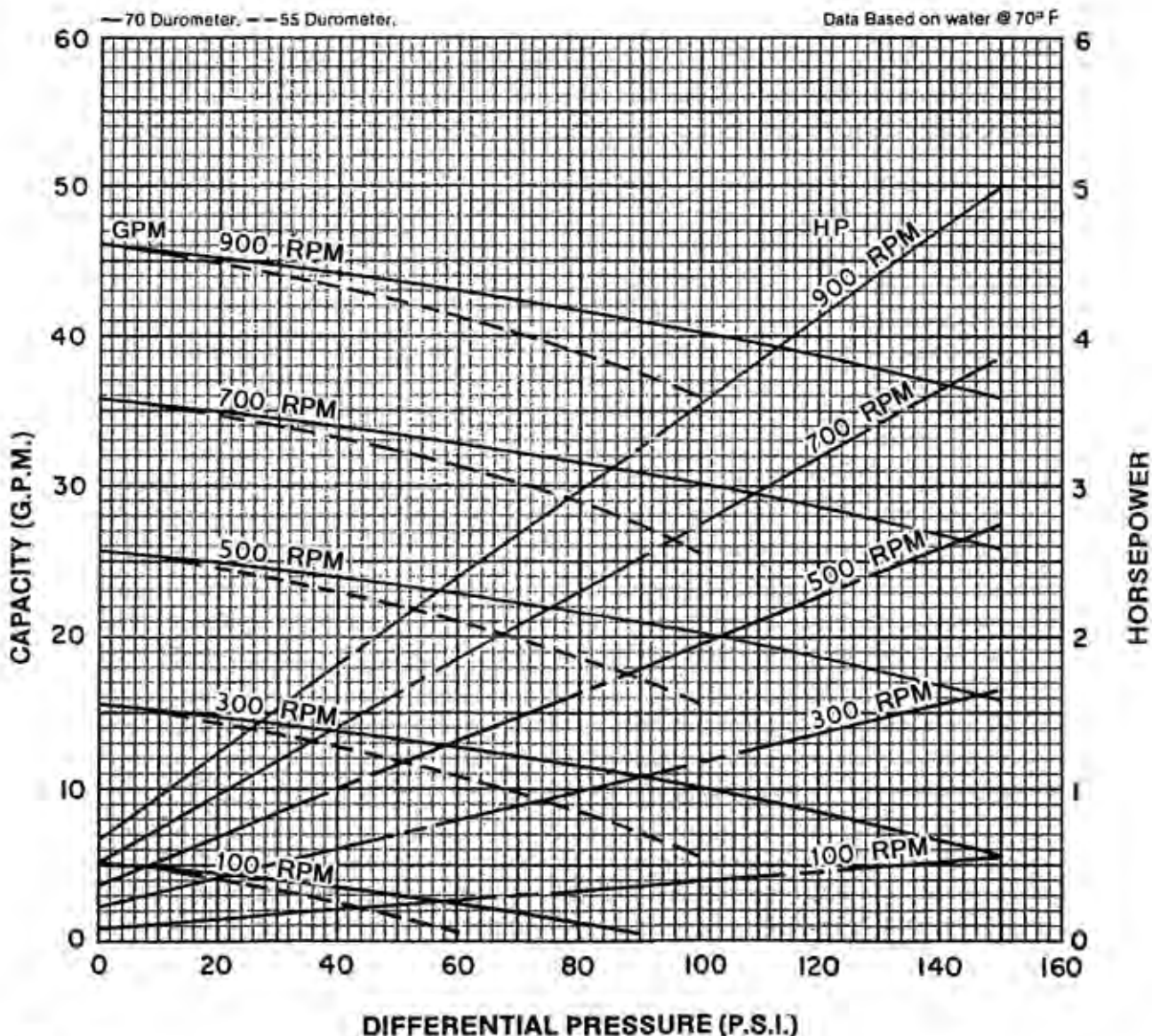
# Justice 1LJ6

RPM	100	300	500	700	900		
NPSH REQ'D	.6	1.7	2.9	4.1	6.9		
MIN. HP	1/3	3/4	1	1 1/2	2		



# Justice 2LJ6

RPM	100	300	500	700	900		
NPSH REQ'D	.6	1.7	2.9	4.1	6.9		
MIN. HP	1/2	1 1/2	2	3	3		



# Justice 3LJ6

RPM	100	300	500	700	900		
NPSH REQ'D	6	1.7	2.9	4.1	6.9		
MIN. HP	1	2	3	5	5		

