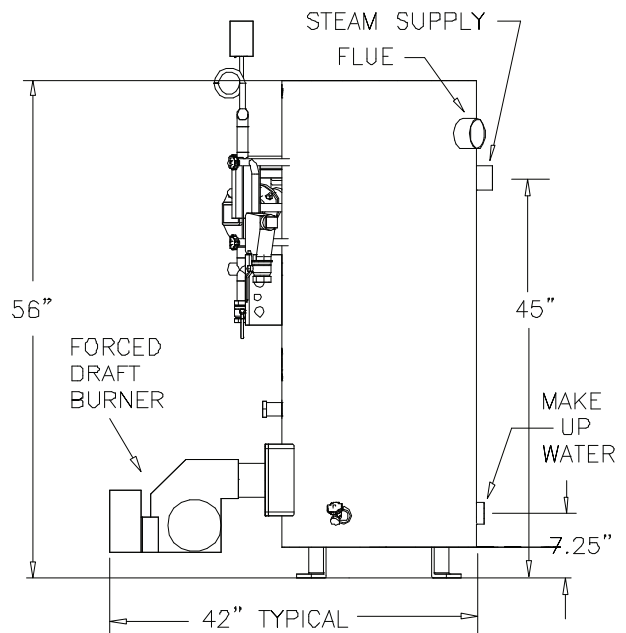
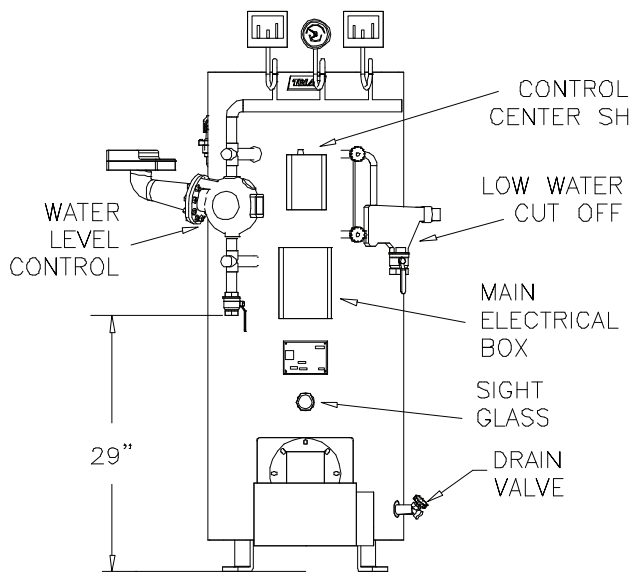
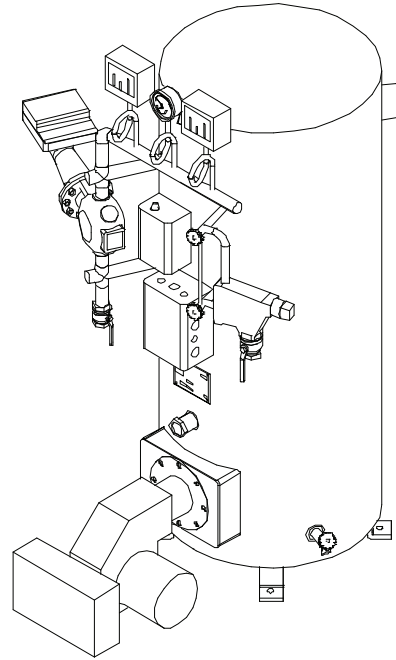
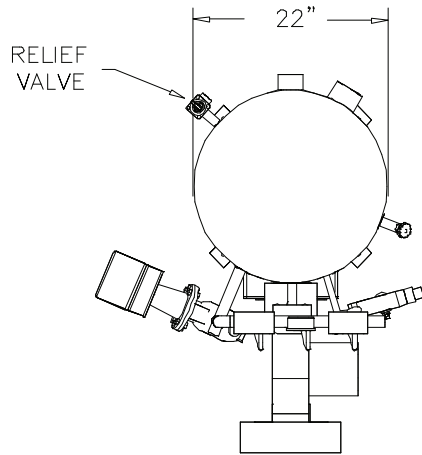




West Chicago, IL 60185
 Phone: 630-562-2700
www.triadboiler.com

TRIAD BOILER SYSTEMS, INC.
SERIES 300 STEAM BOILER



Note: Dimensions subject to change without notice.
 For ATM boiler, flue is 9" out the top, 6" if oil burner.



TRIAD BOILER SYSTEMS, INC. SERIES300 STEAM (Model 300 GMS)

The Series 300 is a steel vertical firetube packaged boiler with a water-backed combustion chamber equipped with high-efficiency turbulators. Boilers come fully wired, and fit through a 34" doorway.

STANDARD EQUIPMENT:

Forced Draft Burner (UL Listed)
L404A-1354 Pressure Control
L404C-1147 High Limit, Manual Reset
Siphon Loops
150 Water Level Control
67 Low Water Cut-Off, Manual Reset
Honeywell Control Relay
Gauge Glass Assembly
Pressure Gauge
Operating Light
15 psi Relief Valve
Vessel Pressure Rating of 125 PSI

OPTIONAL EQUIPMENT:

Gas Fired (NG or Propane), Oil Fired, or Dual Fuel Burners
UL, IRI, FM and CSD-1 Compliance
Low-High and Low-High-Low Gas Trains
Sealed Combustion Air Intake
Barometric Dampers

SPECIFICATIONS:

<i>Input BTU/Hr</i>	<i>Output BTU/Hr</i>	<i>Efficiency</i>	<i>HP Rating Output</i>	<i>Steam lbs./hr</i>
300,000	255,300	85.1%	7.6	263
350,000	293,650	83.9%	8.8	302
399,000	332,370	83.3%	9.9	343

Note: Typical for Natural Gas. - Oil or LP burner data may vary.

APPLICATIONS:

Space Heating up to 15psi

CLEARANCES & CONNECTIONS:

6" between boilers (36" center to center), 8" from front of burner, steam outlet diameter – 2.5" threaded, makeup water – 2.5".

CONTROL:

The Series 300 can operate on its own controls, but a TRIAD microprocessor control panel is recommended for sequencing more than two boilers to minimize run-time and fuel usage.

POWER: 120V, 60Hz, Single Phase, fused for 30 amps.

Min / Max gas pressure, typically 5.6" / 14" WC

WEIGHT/VOLUME:

Shipping Weight – 750 lbs.

Operating Weight - 1,000 lbs.

Volume – 30 gallons

ALL BURNER EQUIPMENT UL APPROVED

TRIAD BOILER REPRESENTATIVE:

TRIAD Boiler Systems, Inc.

West Chicago, IL 60185

Phone: 630-562-2700

Fax: 630-562-2800

Web: www.com.com