



West Chicago, IL 60185
 Phone: 630-562-2700
www.triadboiler.com

TRIAD BOILER SYSTEMS, INC. SERIES 2000 LOW PRESSURE STEAM BOILER

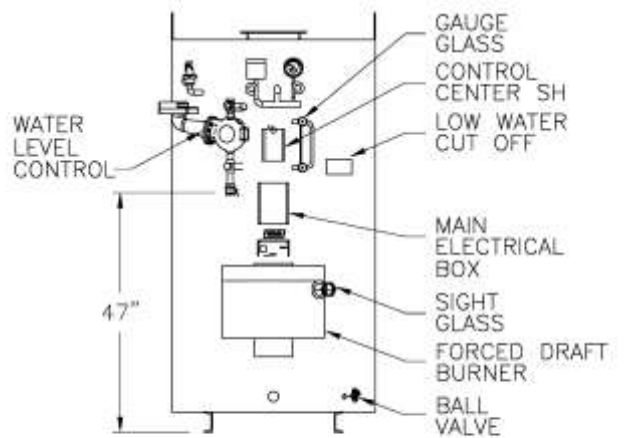
The Series 2000 is a steel vertical firetube packaged boiler with a water-backed combustion chamber equipped with high-efficiency turbulators. Boilers come fully wired with controls mounted.

STANDARD EQUIPMENT:

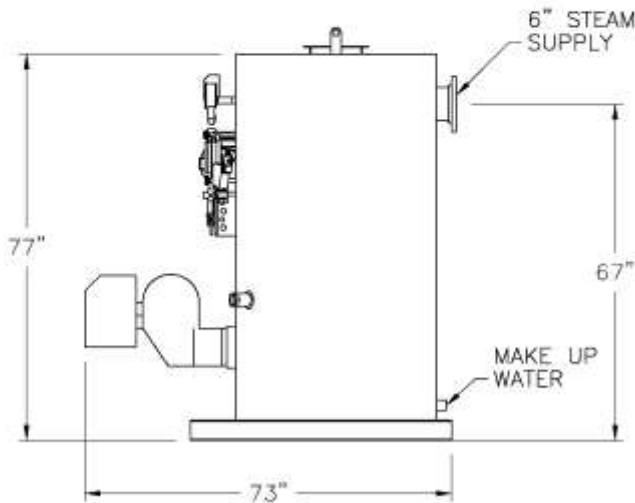
- Low High Low Power Burner (UL Listed)
- L404F Honeywell Pressuretrol Controller
- L4079B Honeywell Pressuretrol Limit Control
- 150 Water Level Control
- 750 M&M Low Water Cut-Off, Manual Reset
- Honeywell Control Relay
- Gauge Glass Assembly
- Pressure Gauge
- Relief Valve
- Lifting Lugs
- UL, FM and CSD-1 Compliance
- Vessel Pressure Rating of 125 PSI

OPTIONAL EQUIPMENT

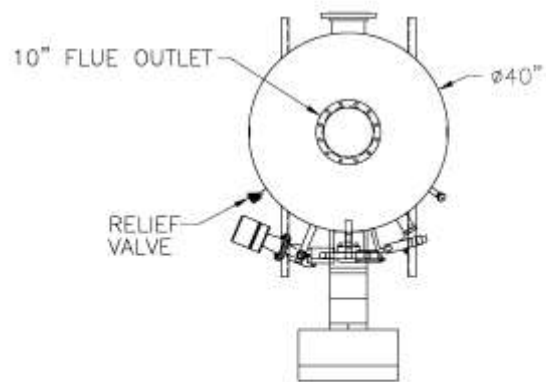
- Gas Fired, Oil Fired, or Dual Fuel Burners
- Modulating Gas Trains
- Sealed Combustion Air Intake
- Barometric Dampers
- Other Options Available



ELEVATION VIEW



RIGHT END VIEW



PLAN VIEW

Note: Dimensions subject to change without notice.



TRIAD BOILER SYSTEMS, INC.
SERIES 2000 STEAM (Model 2000 GMS)

The Series 2000 is a steel vertical firetube packaged boiler with a water-backed combustion chamber equipped with high-efficiency turbulators. Boilers come fully wired with controls mounted.

SPECIFICATIONS:

<i>Input BTU/Hr</i>	<i>Output BTU/Hr</i>	<i>Efficiency</i>	<i>HP Rating</i>	<i>Steam lbs./hr</i>
1,700,000	1,411,000	83.0%	42.2	1,455
1,800,000	1,494,000	83.0%	44.7	1,542
1,900,000	1,577,000	83.0%	47.2	1,628
2,000,000	1,660,000	83.0%	49.6	1,711

Note: Typical for Natural Gas. - LP burner data may vary.

APPLICATIONS:

Space Heating and Process Steam up to 15psi

CLEARANCES & CONNECTIONS:

Consult local codes for front, rear, and side clearances. 1.5" relief valve outlet, steam outlet diameter - 6" flanged, makeup water - 3".

CONTROL:

The Series 2000 can operate on its own controls, but a TRIAD microprocessor control panel is recommended for sequencing more than two boilers to minimize run-time and fuel usage.

FLUE: Category I when properly applied.

POWER: 120V, 60Hz, Single Phase, fused for 30 amps. (208/230/460 - 3 phase optional). Min / Max gas pressure, typically 4.9" / 14" WC

WEIGHT/VOLUME:

Shipping Weight - 2,200 lbs.
Operating Weight - 1,810 lbs.
Volume - 90 gallons

ALL BURNER EQUIPMENT UL APPROVED

TRIAD BOILER REPRESENTATIVE:

TRIAD Boiler Systems, Inc.

West Chicago, IL 60185

Phone: 630-562-2700

Fax: 630-562-2800

Web: www.com