

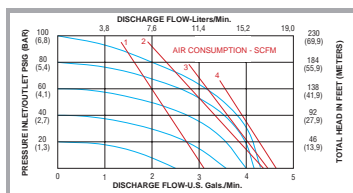


ALL-FLO PUMPS DELIVER UNMATCHED RELIABILITY AND PERFORMANCE



In your industry, you rely on equipment that works as reliably as it does efficiently. And when your equipment performs with the versatility and durability that your application demands, you can keep things running smoothly.

All-Flo designs and manufactures rugged, lube-free, non-stall/freeze air diaphragm pumps to provide the best quality products available to the industry. Each performance engineered pump is built to the highest standards to provide trouble-free, continuous output — even under the toughest conditions.



Serving a wide range of industries, including oil & petroleum, petrochemical, food & beverage, mining and construction, All-Flo's global network of distributors ensure local, convenient service and availability. And

using a wide variety of materials, All-Flo pumps are ideal for any application, offering the best solids handling, abrasive resistant, metallic and non-metallic options available in the market.

And because no two applications or environments are the same, All-Flo has created a spectrum of versatile pump solutions. Modular option components allow you to select the ideal capacity, as well as housing and internal materials. Available in a range of sizes, styles and materials, All-Flo can customize a pump to meet any application. All to ensure high-performance, durable and low-maintenance reliability you can count on. We've worked hard to provide you with the best pumps, and the result is pumps that work harder.



All-Flo is a leading manufacturer of rugged, lube-free, non-stall/freeze air diaphragm pumps. Offering a comprehensive set of pump solutions completely customizable for any application, All-Flo's American-made pumps work harder in any industry.

All-Flo Pump Company, LLC.

7750 Tyler Blvd.

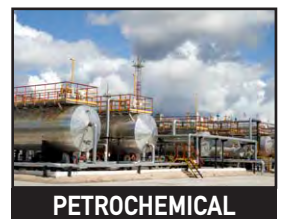
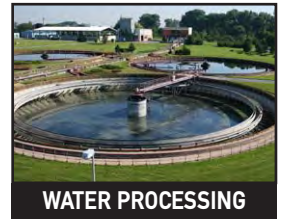
Mentor, Ohio 44060

Ph: 440.354.1700

Fax: 440.354.9466

THE ALL-PURPOSE PUMP FOR ANY APPLICATION

All-Flo offers an extensive line of sizes and material options to fit virtually any application requirement. Modular components allow for easy customization using off-the-shelf components.



HEAVY DUTY METALLIC PUMP



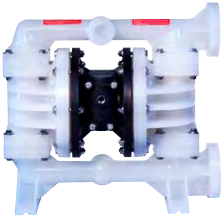
FEATURES

- Non-Metallic Air Section
- Bolted Chamber Design
- Unbalanced Air Spool
- Thermoplastic Diaphragms
- Stainless and Aluminum
- Sizes 1/2" to 3"

BENEFITS

- Lightweight and Corrosion Resistant
- Ease of Maintenance
- Stall Free Operation
- Extended Operational Life
- Maximum Chemical Compatibility
- Wide Application Range (17GPM to 255GPM)

HEAVY DUTY NON-METALLIC PUMPS



FEATURES

- Multiple Porting Options
- Bolted Chamber Design
- Unbalanced Air Spool
- Thermoplastic Diaphragms
- Available in a Variety of Materials
- Sizes 1/2" to 3"

BENEFITS

- Flexibility of Installation
- Ease of Maintenance
- Stall Free Operation
- Extended Operational Life
- Maximum Chemical Compatibility
- Wide Application Range (17GPM to 255GPM)

ALL-PUR FDA MATERIAL PUMPS



FEATURES

- FDA Tri-Clamps
- Electropolished and Passivated Stainless Steel
- Bolted Chamber Design
- Unbalanced Air Spool
- Thermoplastic Diaphragms
- Sizes 1/2" to 2"

BENEFITS

- Quick Disconnect and Cleaning
- Allows for Sanitary Installation
- Ease of Maintenance
- Stall Free Operation
- Extended Operational Life
- Wide Application Range (17GPM to 255GPM)

MAX-PASS™ SOLIDS HANDLING PUMPS



FEATURES

- Max-Pass™ Solids Handling Valve
- Non-Metallic Air Section
- Bolted Chamber Design
- Unbalanced Air Spool
- Thermoplastic Diaphragms
- Available in Metallic and Non-Metallic Designs
- Sizes 1/2" and 1"

BENEFITS

- Increased Suction Lift
- Lightweight and Corrosion Resistant
- Ease of Maintenance
- Stall Free Operation
- Extended Operational Life
- Maximum Chemical Compatibility
- Solids handling from 3/8" to 3/4"

INTERMITTENT DUTY NON-METALLIC PUMPS



FEATURES

- Mechanical Air Section
- Compact Design
- Thermoplastic Diaphragms
- Available in a Variety of Materials
- Sizes 1/4" and 3/8"
- Max-Pass™ Available

BENEFITS

- Reliable Operation
- Allows for Small Footprint Installation
- Extended Diaphragm Life
- Maximum Chemical Compatibility
- Flow Rated from 4GPM to 9GPM
- Increased Suction Lift